



TRUCK GAUGES

DEALER CATALOG



TABLE OF CONTENTS

WHO IS MAXTOW?	1
HOW TO BUILD A PACKAGE	2
GAUGE FEATURES	3
GAUGE TYPES	4
TRUCK PODS	8
CHEVROLET & GMC TRUCKS	8
DODGE TRUCKS	10
FORD TRUCKS	11
UNIVERSAL	12
ACCESSORIES	13
REPLACEMENT PARTS	15



WHO IS **MAXTOW**?

In 2012, MaxTow Performance was launched to provide diesel truck owners with a gauge series that was built to endure the tough life of a diesel engine. MaxTow would be the first to bring diesel truck owners the best of both worlds, with digital and analog readings in one gauge. Not only were we looking to provide a unique product unlike any other, we also wanted to guarantee satisfaction by offering a limited one-year warranty.

MaxTow's Double Vision® Gauge Series was built to last. We can be with you through the long haul by offering free lifetime technical support as well. Our customer service and technical support teams consist of educated team members that are based in-house to provide you with the best service from the same location your items ship from! Join us as we continue to develop and adapt to provide the best performance line for diesel addicts for years to come. Get ready to hit the road and Tow to the Max!



FREE LIFETIME TECHNICAL SUPPORT



1 YEAR LIMITED WARRANTY



SAME DAY SHIPPING ON ORDERS PLACED BY 3PM EST

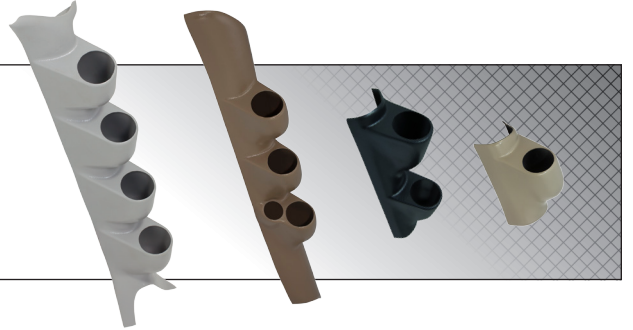


NO HASSLE RETURNS

HOW TO BUILD A PACKAGE

1 SELECT A POD

First, simply select a pod for mount your gauges to. MaxTow offers vehicle specific pods and universal pods.



2 SELECT A GAUGE COLOR

Once you have chosen a pod, it's time to select the gauge series color of your preference.



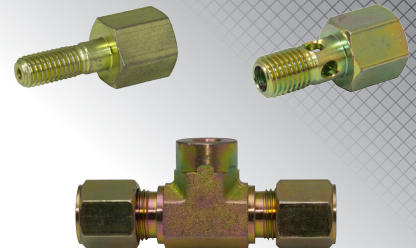
3 SELECT GAUGE TYPE

After you have selected your gauge type, it's time to decide what you will be monitoring in your truck.



4 SELECT INSTALL ACCESSORIES

After selecting your gauge type, be sure to check for any additional installation accessories you may need for acquiring the readings from your truck. If you need more assistance, our customer service team is available to answer any questions you have.



5 PLACE YOUR ORDER

Await the arrival of your MaxTow Custom Gauge Package!



GAUGE FEATURES

DOUBLE VISION®

If you like the classic look of an analog gauge, the MaxTow Double Vision® Gauge Series will not disappoint! The Double Vision Gauge Series features dual readout displays with an illuminated red needle to cater to your analog preference, while also providing an easy-to-read LED digital numerical readout. Available in a black or white gauge face, with a blue or green LED display, the Double Vision Gauge Series is offered in a variety of diesel gauge options to fit all of your monitoring needs!



STEPPER MOTOR TECHNOLOGY

Unmatched by its competition, the Double Vision Series features Stepper Motor Technology which allows for extremely smooth needle movement for reliable readings that will keep up with the changing pressures and temperatures of your truck's most vital components.

DIMMING MODES

Customization is no issue, as the Double Vision Series features a total of 6 different dimming modes! The daytime and nighttime dimming modes each feature 3 customizable settings that allow you to set your brightness preference when hitting the road during the day or night. Don't worry about having to reset the mode each time you power down your truck; the included brightness recall function will remember the previous brightness setting.

Daytime Modes



Nighttime Modes



BOOST GAUGES

<p>30 PSI BOOST/VACUUM GAUGE</p>  <p>SENSOR INCLUDED</p>	 <p>BLACK & BLUE MT-BDV01</p>	 <p>BLACK & GREEN MT-DV01</p>	 <p>WHITE & BLUE MT-WBDV01</p>	 <p>WHITE & GREEN MT-WDV01</p>
<p>35 PSI BOOST GAUGE</p>  <p>SENSOR INCLUDED</p>	 <p>BLACK & BLUE MT-BDV01_35</p>	 <p>BLACK & GREEN MT-DV01_35</p>	 <p>WHITE & BLUE MT-WBDV01_35</p>	 <p>WHITE & GREEN MT-WDV01_35</p>
<p>60 PSI BOOST GAUGE</p>  <p>SENSOR INCLUDED</p>	 <p>BLACK & BLUE MT-BDV01_60</p>	 <p>BLACK & GREEN MT-DV01_60</p>	 <p>WHITE & BLUE MT-WBDV01_60</p>	 <p>WHITE & GREEN MT-WDV01_60</p>

EGT / PYROMETER GAUGES

<p>1500°F PYROMETER GAUGE</p>  <p>SENSOR INCLUDED</p>	 <p>BLACK & BLUE MT-BDV08_1500</p>	 <p>BLACK & GREEN MT-DV08_1500</p>	 <p>WHITE & BLUE MT-WBDV08_1500</p>	 <p>WHITE & GREEN MT-WDV08_1500</p>
<p>2200°F EXHAUST GAS TEMPERATURE GAUGE</p>  <p>SENSOR INCLUDED</p>	 <p>BLACK & BLUE MT-BDV08</p>	 <p>BLACK & GREEN MT-DV08</p>	 <p>WHITE & BLUE MT-WBDV08</p>	 <p>WHITE & GREEN MT-WDV08</p>

FUEL PRESSURE GAUGES

100 PSI FUEL PRESSURE GAUGE

SENSOR INCLUDED



 BLACK & BLUE MT-BDV11	 BLACK & GREEN MT-DV11	 WHITE & BLUE MT-WBDV11	 WHITE & GREEN MT-WDV11
---	---	---	--

30 PSI FUEL PRESSURE GAUGE

SENSOR INCLUDED



 BLACK & BLUE MT-BDV11_30	 BLACK & GREEN MT-DV11_30	 WHITE & BLUE MT-WBDV11_30	 WHITE & GREEN MT-WDV11_30
--	--	--	---

TRANSMISSION TEMPERATURE GAUGES

260°F TRANSMISSION TEMPERATURE GAUGE

SENSOR INCLUDED



 BLACK & BLUE MT-BDV12	 BLACK & GREEN MT-DV12	 WHITE & BLUE MT-WBDV12	 WHITE & GREEN MT-WDV12
---	---	---	--

NITROUS PRESSURE GAUGES

1600 PSI NITROUS GAUGE

SENSOR INCLUDED



 BLACK & BLUE MT-BDV14	 BLACK & GREEN MT-DV14	 WHITE & BLUE MT-WBDV14	 WHITE & GREEN MT-WDV14
---	---	---	--

RAIL PRESSURE GAUGES

30,000 PSI
FUEL RAIL
PRESSURE GAUGE



BLACK & BLUE
MT-BDV19



BLACK & GREEN
MT-DV19



WHITE & BLUE
MT-WBDV19



WHITE & GREEN
MT-WDV19

WIDEBAND AIR/FUEL GAUGES

WIDEBAND
AIR/FUEL
RATIO GAUGE



BLACK & BLUE
MT-BDV02-WB



BLACK & GREEN
MT-DV02-WB



WHITE & BLUE
MT-WBDV02-WB



WHITE & GREEN
MT-WDV02-WB

SENSOR INCLUDED



OIL TEMPERATURE GAUGES

280°F
OIL TEMPERATURE
GAUGE



BLACK & BLUE
MT-BDV07



BLACK & GREEN
MT-DV07



WHITE & BLUE
MT-WBDV07



WHITE & GREEN
MT-WDV07

SENSOR INCLUDED



WATER TEMPERATURE GAUGES

280°F
WATER TEMPERATURE
GAUGE



BLACK & BLUE
MT-BDV06



BLACK & GREEN
MT-DV06



WHITE & BLUE
MT-WBDV06



WHITE & GREEN
MT-WDV06

SENSOR INCLUDED



OIL PRESSURE GAUGES

100 PSI
OIL PRESSURE GAUGE



SENSOR INCLUDED



BLACK & BLUE
MT-BDV04



BLACK & GREEN
MT-DV04



WHITE & BLUE
MT-WBDV04



WHITE & GREEN
MT-WDV04

VOLT GAUGES

8-18 V
VOLT GAUGE



BLACK & BLUE
MT-BDV05



BLACK & GREEN
MT-DV05



WHITE & BLUE
MT-WBDV05



WHITE & GREEN
MT-WDV05

AIR PRESSURE GAUGES

200 PSI
AIR PRESSURE GAUGE



SENSOR INCLUDED



BLACK & BLUE
MT-BDV13



BLACK & GREEN
MT-DV13



WHITE & BLUE
MT-WBDV13



WHITE & GREEN
MT-WDV13

TACHOMETER GAUGES

10,000 RPM
TACHOMETER GAUGE



BLACK & BLUE
MT-BDV10



BLACK & GREEN
MT-DV10



WHITE & BLUE
MT-WBDV10



WHITE & GREEN
MT-WDV10

1988-1994 CHEVROLET C/K FULL SIZE



POD DETAILS

Pillar Pod & Color Options:

- Triple Pillar Pod (BLACK: MT-372_CHEVY)
- Dual Pillar Pod (BLACK: MT-239)

1995-1998 CHEVROLET C/K FULL SIZE



POD DETAILS

Pillar Pod & Color Options:

- Triple Pillar Pod (BLACK: MT-330_CHEVY)
- Dual Pillar Pod (BLACK: MT-240)

2000-2006 CHEVROLET SILVERADO



POD DETAILS

Pillar Pod & Color Options:

- Triple Pillar Pod w/Speaker Hole (BLACK: MT-371 | GRAY: MT-371G | TAN: MT-371T)
- Triple Pillar Pod (BLACK: MT-366 | GRAY: MT-366G | TAN: MT-366T)
- Dual Pillar Pod (BLACK: MT-242_CHEVY)

2007-2013 CHEVROLET SILVERADO



POD DETAILS

Pillar Pod & Color Options:

- Triple Pillar Pod w/Speaker Hole (TAN: MT-380)

1988-1994 GMC C/K FULL SIZE



POD DETAILS

Pillar Pod & Color Options:

- Triple Pillar Pod (BLACK: MT-372_GMC)

1994-2002 GMC SONOMA



POD DETAILS

Pillar Pod & Color Options:

- Triple Pillar Pod (BLACK: MT-303_GMC)

1995-1998 GMC C/K FULL SIZE



POD DETAILS

Pillar Pod & Color Options:

- Triple Pillar Pod (BLACK: MT-330_GMC)

2000-2006 GMC SIERRA DURAMAX



POD DETAILS

Pillar Pod & Color Options:

- Triple Pillar Pod w/Speaker Hole (TAN: MT-371T_GMC | BLACK: MT-371_GMC | GRAY: MT-371G_GMC)
- Triple Pillar Pod (BLACK: MT-366_GMC | GRAY: MT-366G_GMC | TAN: MT-366T_GMC)
- Dual Pillar Pod (BLACK: MT-242_GMC)

2007-2013 GMC SIERRA DURAMAX



Pillar Pod & Color Options:

- Triple Pillar Pod w/Speaker Hole (TAN: MT-380_GMC)

1986-1993 DODGE RAM CUMMINS



POD DETAILS

Pillar Pod & Color Options:

- Triple Pillar Pod (BLACK: MT-382)

POD DETAILS

Dash Pod & Color Options:

- Triple Dash Pod (BLACK: MT-D15)

2010-2016 DODGE RAM CUMMINS



POD DETAILS

Pillar Pod & Color Options:

- Triple Pillar Pod (TAN: MT-374)

1994-1997 DODGE RAM CUMMINS



POD DETAILS

Pillar Pod & Color Options:

- Triple Pillar Pod (BLACK: MT-349)
- Full-Size Dual Pillar Pod (BLACK: MT-254)
- Dual Pillar Pod (BLACK: MT-246)

1998-2002 DODGE RAM CUMMINS



POD DETAILS

Pillar Pod & Color Options:

- Triple Pillar Pod w/Speaker Hole (BLACK: MT-343 | GRAY: MT-343G | TAN: MT-343T)
- Triple Pillar Pod (BLACK: MT-304 | GRAY: MT-304G | TAN: MT-304T)
- Dual Pillar Pod (BLACK: MT-242_GMC)

2003-2009 DODGE RAM CUMMINS



POD DETAILS

Pillar Pod & Color Options:

- 06-09 Taupe Quad Pillar Pod (MT-463G)
- Triple Pillar Pod (BLACK: MT-363 | TAUPE: MT-363G)
- Full-Size Dual Taupe Pillar Pod (MT-263G)
- Single Pillar Pod (BLACK: MT-127 | TAUPE: MT-127G, MT-132G)

1987-1991 FORD F-SERIES



POD DETAILS

Pillar Pod & Color Options:

- Dual Pillar Pod (BLACK: MT-247)

2011-2016 FORD SUPER DUTY



POD DETAILS

Pillar Pod & Color Options:

- Triple Pillar Pod (BLACK: MT-385 | GRAY: MT-385G | TAN: MT-385T)

1992-1997 FORD F-SERIES



POD DETAILS

Pillar Pod & Color Options:

- Quad Pillar Pod (BLACK: MT-446 | GRAY: MT-446G)
- Triple Pillar Pod (BLACK: MT-346 | GRAY: MT-346G)
- Dual Pillar Pod (BLACK: MT-247)

1999-2007 FORD SUPER DUTY



POD DETAILS

Pillar Pod & Color Options:

- Quad Pillar Pod (BLACK: MT-405 | GRAY: MT-405G | TAN: MT-405T)
- Triple Pillar Pod (BLACK: MT-305 | GRAY: MT-305G | TAN: MT-305T)
- Full Size Dual Pillar Pod (BLACK: MT-2205 | GRAY: MT-2205G | MT-2205T)

2008-2010 FORD SUPER DUTY



POD DETAILS

Pillar Pod & Color Options:

- Triple Pillar Pod (BLACK: MT-375 | GRAY: MT-375G)

UNIVERSAL PILLAR PODS



POD DETAILS

Pod & Color Options:

- Triple Pillar Pod (BLACK: MT-U3 | GRAY: MT-U3_G)
- Dual Pillar Pod (BLACK: MT-U2)
- Single Pillar Pod (BLACK: MT-U1)

UNIVERSAL CONSOLE DASHBOARD POD



POD DETAILS

Pod & Color Options:

- Triple Dash Pod (BLACK: MT-UD3)
- Dual Dash Pod (BLACK: MT-UDD)
- Single Dash Pod (BLACK: MT-U01D)

UNIVERSAL DASHBOARD POD W/ DOME LIP



POD DETAILS

Pod & Color Options:

- Triple Dash Pod (BLACK: MT-UD3_LIP_52MM)

UNIVERSAL DASHBOARD SWIVEL POD

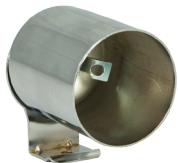


POD DETAILS

Pod & Color Options:

- Triple Dash Pod (BLACK: MT-U03)
- Single Dash Pod (BLACK: MT-U01)

UNIVERSAL SINGLE GAUGE POD



POD DETAILS

Pod & Color Options:

- Chrome Pod (MT-U01C)
- Metal Pod (BLACK: MT-U01B)

UNIVERSAL DIN RADIO FACE POD



POD DETAILS

Pod & Color Options:

- Triple Radio Face Pod (MT-UR)

BOOST BOLT ADAPTERS



ITEM:	ITEM NUMBER:
5.9L Cummins	▪ MT-FA_BoostBolt
6.7L Cummins	▪ MT-FA_BoostBolt_67

BANJO BOLT ADAPTERS



ITEM:	ITEM NUMBER:
Cummins 12 Valve Fuel Press	▪ MT-FA_Banjo_12v
Cummins 24 Valve Fuel Press	▪ MT-FA_Banjo

DIESEL FUEL PRESSURE ADAPTER



ITEM:	ITEM NUMBER:
Ford 7.3L Power Stroke	▪ MT-FA_PS-7.3-Fuel-PSI
Ford 6.0L Power Stroke	▪ MT-FA_PS-6.0-Fuel-PSI
Chevy GM Duramax 6.6L	▪ MT-FA_Duramax

TRANSMISSION LINE T-FITTING ADAPTER



ITEM:	ITEM NUMBER:
Dodge Cummins 1/2"	▪ MT-FA_TL-12
GM Duramax Allison 1000 5/8"	▪ MT-FA-TL-58
3/8" Trans Line T-Fitting Adapter	▪ MT-FA-TL-38

1/8-27 NPT FEMALE THREAD ADAPTER



ITEM:	ITEM NUMBER:
1/8-27 NPT to 1/8 BSPT Male	▪ MT-FA_BSPT
1/8-27 NPT to 5/8-18 Male	▪ MT-FA_5/8-18
1/8-27 NPT to 1/4-18 NPT Male	▪ MT-FA_1/4NPT
1/8-27 NPT to M14-P1.5 Male	▪ MT-FA_M14
1/8-27 NPT to M16-P1.5 Male	▪ MT-FA_M16
1/8-27 NPT to M12-P1.5 Male	▪ MT-FA_M12
1/8-27 NPT to M10-P1.0 Male	▪ MT-FA_M10-1.0
1/8-27 NPT to M10-P1.5 Male	▪ MT-FA_M10-1.5

FUEL PRESSURE T-FITTING ADAPTER



ITEM:	ITEM NUMBER:
1/2" Fuel Line	▪ MT-FA-FLA-12
3/8" Fuel Line	▪ MT-FA-FLA-38

SNUBBER VALVE



ITEM:	ITEM NUMBER:
1/8 NPT Diesel Snubber Valve	▪ MT-SNUBBER

FUEL PRESSURE BIG LINE KIT



ITEM:	ITEM NUMBER:
98.5-07 Dodge Cummins 5.9L	▪ MT-BL-9807-59
07.5-09 Dodge Cummins 6.7L	▪ MT-BL-07509-67
10-15 Dodge Cummins 6.7L	▪ MT-BL-1015-67

WIRE HARNESS



ITEM:	ITEM NUMBER:
3 Gauge Power Wire Harness	▪ MT-GW3
4 Gauge Power Wire Harness	▪ MT-GW4
Fuel Rail Pressure	▪ MT-Harness-Rail
High Pressure Oil Pressure HPOP	▪ MT-Harness-HPOP

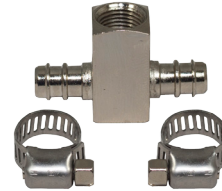


ITEM:	ITEM NUMBER:
Sensor Relocation Hose Kit	▪ MT-Remote_Line

EXPANDABLE CIRCUIT & 4 AMP FUSE



ITEM:	ITEM NUMBER:
ATO	▪ MT-ADD-ATO
Mini	▪ MT-ADD-MINI
Low Profile Mini	▪ MT-ADD-LP-MINI
Micro2	▪ MT-ADD-MICRO2



ITEM:	ITEM NUMBER:
Ford Power Stroke Boost T-Fitting Adapter w/ Hose Clamps	▪ MT-FA-Boost-Fitting



ITEM:	ITEM NUMBER:
7.3L Power Stroke Air Intake Heater Boost Plug	▪ MT-FA_73_AIHBP



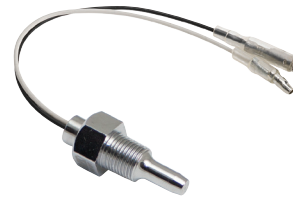
ITEM:	ITEM NUMBER:
1/8 NPT DRILL & TAP KIT	▪ MT-Tap_Kit

REPLACEMENT PARTS



ITEM:	ITEM NUMBER:
0-60 PSI Boost Sensor	▪ MT-PS-03_Boost
0-30 PSI Fuel Pressure Sensor	▪ MT-PS-03_Fuel
0-100 PSI Fuel Pressure Sensor	▪ MT-PS-02_Fuel
Oil Pressure Sensor	▪ MT-PS-02_Oil
Air Pressure Sensor	▪ MT-PS-05
Electronic Boost/Vacuum Sensor	▪ MT-PS-04

ITEM:	ITEM NUMBER:
Pressure Sensor Harness	▪ MT-C-DV-SH-06
Temperature Sensor Harness	▪ MT-C-DV-SH-07
Exhaust Temperature Sensor Harness	▪ MT-C-DV-SH-04
Boost / Vacuum Sensor Harness	▪ MT-C-DV-SH-08
Gauge Power Harness	▪ MT-C-DV-PH-01



ITEM:	ITEM NUMBER:
Electronic Exhaust Temperature Probe	▪ MT-TS-03

ITEM:	ITEM NUMBER:
Temperature Sensor	▪ MT-TS-01

BUILD YOUR DREAM **PACKAGE**



Call your wholesale representative or email us at Dealers@MaxTow.com to place your order or to get more information on any of our products.

WWW.MAXTOW.COM • 1.877.7MAXTOW EXT 5

MAX
TOW
GAUGES®



#MAXTOW

**JOIN THE COMMUNITY &
SUBMIT YOUR PHOTOS TODAY!**

SHOW OFF YOUR QUALITY INSTALLATION PHOTOS WITH THE
MAXTOW COMMUNITY BY SUBMITTING YOUR PHOTOS TO US
FOR A CHANCE TO BE FEATURED ON OUR SOCIAL MEDIA!





ADDRESS: 444 COMMERCE LANE SUITE C • WEST BERLIN, NJ 08091

PHONE: 1.877.7MAXTOW • 1.856.336.8100

WEB: WWW.MAXTOW.COM • DEALERS@MAXTOW.COM



*Prices and availability subject to change without notice